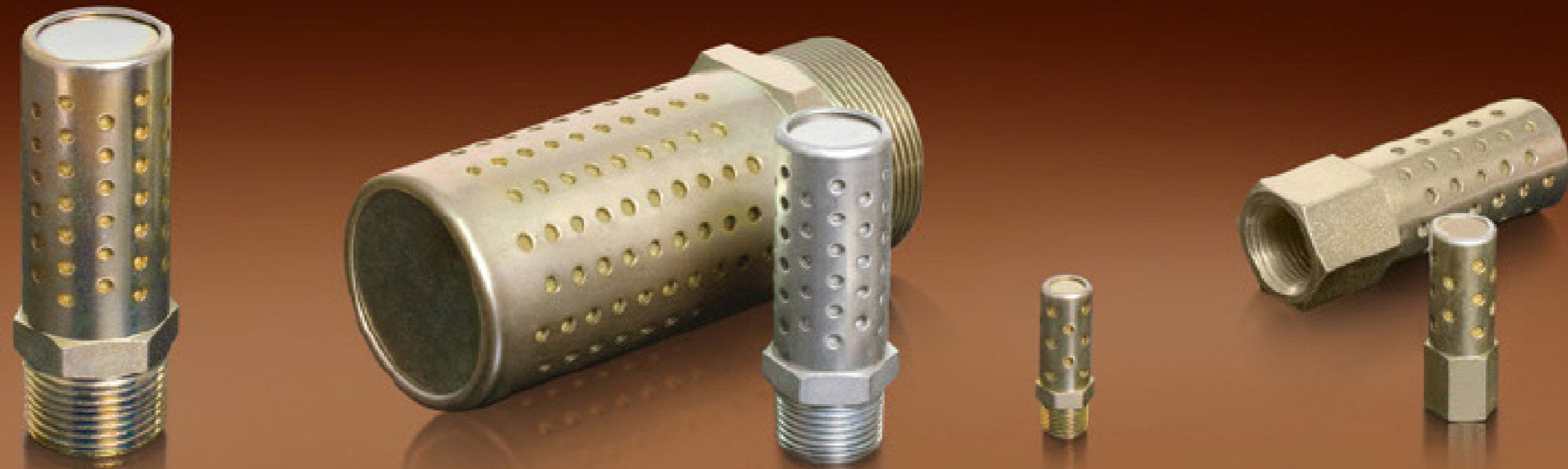
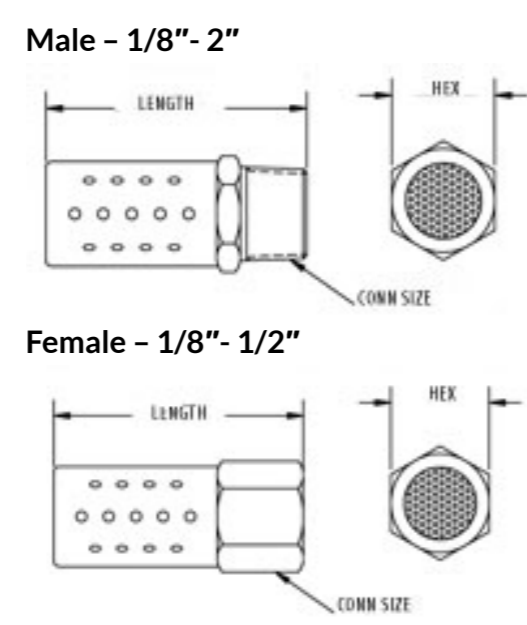


BANTAM® MUFFLER

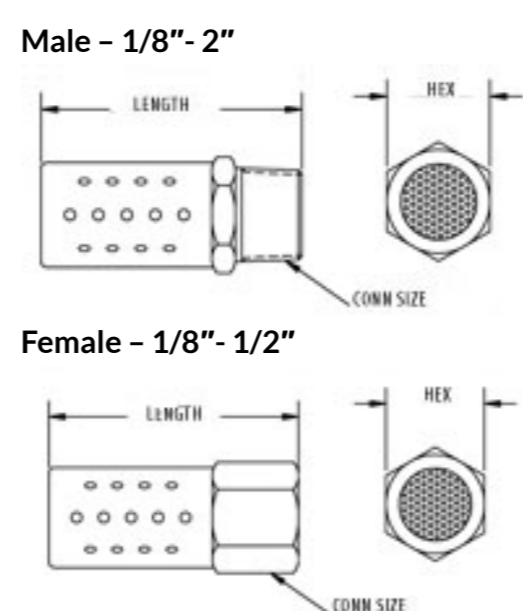


BANTAM® MUFFLER



IDEAL FOR USE WHERE SPACE IS LIMITED

- Constructed of corrosion-resistant metals to withstand shock, with different models offering continuous heavy-duty use under all types of conditions
- Standard features include the original, precise distribution of peripheral openings in a zinc-plated steel and brass acoustical element, which softly disperses exhaust air uniformly over a 360° pattern
- All stainless steel construction available for very corrosive or sensitive situations
- Supplied with a standard pipe thread fitting for attaching directly to the exhaust ports of air-operated equipment
- Recommended for general purpose air exhaust applications for pressures up to 175 psi (12 Bar)



Conn Size	Model Type	Standard Construction		All Stainless Steel		Dimensions	
		Male NPT Item Number	Male BSPT Item Number	Male NPT Item Number	Hex	Length	
1/8	B18	0154018	0554018	0503018	.43	1.37	
1/4	B28	0154028	0554028	0503028	.56	1.75	
3/8	B38	0154038	0554038	0503038	.69	2.20	
1/2	B48	0154048	0554048	0503048	.87	2.75	
3/4	B68	0154068	0554068	0503068	1.06	3.15	
1	B88	0154088	0554088	0503088	1.31	3.87	
1-1/4	B108	0154108	0554108	-	1.68	4.50	
1-1/2	B128	0154128	0554128	-	2.00	5.00	
2	B168	0154168	0554168	-	2.37	5.50	

Conn Size	Model Type	Female - Standard Construction		Dimensions	
		Female NPS Item Number	Hex	Length	
1/8	B18	0254018	.56	1.75	
1/4	B28	0254028	.69	2.20	
3/8	B38	0254038	.87	2.75	
1/2	B48	0254048	1.06	3.15	